

H24040 – Yuletide Splendour

Gluten	Soya	Peanuts	Nuts	Sesame	Lupin	Milk	Eggs	Sulphites	Celery	Mustard	Fish	Molluscs	Crustacean
Mandatory allergens contains:													
✓	✓	z	✓	✓		✓	✓	✓		z	z	z	z
Key													
✓	Listed in ingredients												
z	May contain traces												

Product Name: Gruet Brut Champagne NV 75cl (12% ABV)

Ingredients: N/A

Allergens: Contains **SULPHITES**.

Storage: Store in a cool, dry place.

Typical Value per 100g

Energy (kj):	N/A
Energy (kcal):	N/A
Fat (g):	N/A
Fat of which saturates (g):	N/A
Carbohydrate (g):	N/A
Carbohydrate of which sugars (g):	N/A
Protein (g):	N/A
Salt (g):	N/A

Product Name: Vista Alegre Fine Ruby Port 75cl (19% ABV)

Ingredients: N/A

Allergens: Contains **SULPHITES**.

Storage: Store in a cool, dry place.

Typical Value per 100g

Energy (kj):	N/A
Energy (kcal):	N/A
Fat (g):	N/A
Fat of which saturates (g):	N/A
Carbohydrate (g):	N/A
Carbohydrate of which sugars (g):	N/A
Protein (g):	N/A
Salt (g):	N/A

Product Name: Pico a Pico Carmenere Merlot 75cl (13% ABV)

Ingredients: N/A



Allergens: Contains **SULPHITES**.

Storage: Store in a cool, dry place.

Typical Value per 100g

Energy (kj):	N/A
Energy (kcal):	N/A
Fat (g):	N/A
Fat of which saturates (g):	N/A
Carbohydrate (g):	N/A
Carbohydrate of which sugars (g):	N/A
Protein (g):	N/A
Salt (g):	N/A

Product Name: Archivio Pecorino 75cl (13.5% ABV)

Ingredients: N/A

Allergens: Contains **SULPHITES**.

Storage: Store in a cool, dry place.

Typical Value per 100g

Energy (kj):	N/A
Energy (kcal):	N/A
Fat (g):	N/A
Fat of which saturates (g):	N/A
Carbohydrate (g):	N/A
Carbohydrate of which sugars (g):	N/A
Protein (g):	N/A
Salt (g):	N/A

Product Name: Archivio Aglianico 75cl (14% ABV)

Ingredients: N/A

Allergens: Contains **SULPHITES**.

Storage: Store in a cool, dry place.

Typical Value per 100g

Energy (kj):	N/A
Energy (kcal):	N/A
Fat (g):	N/A
Fat of which saturates (g):	N/A
Carbohydrate (g):	N/A
Carbohydrate of which sugars (g):	N/A
Protein (g):	N/A
Salt (g):	N/A



Product Name: Bottega White Zero Alcohol 75cl (0% ABV)

Ingredients: N/A

Allergens: Contains **SULPHITES**.

Storage: Store in a cool, dry place.

Typical Value per 100g

Energy (kj):	N/A
Energy (kcal):	N/A
Fat (g):	N/A
Fat of which saturates (g):	N/A
Carbohydrate (g):	N/A
Carbohydrate of which sugars (g):	N/A
Protein (g):	N/A
Salt (g):	N/A

Product Name: Santa Catharina Cabernet Sauvignon 75cl

Ingredients: N/A

Allergens: Contains **SULPHITES**.

Storage: Store in a cool, dry place.

Typical Value per 100g

Energy (kj):	N/A
Energy (kcal):	N/A
Fat (g):	N/A
Fat of which saturates (g):	N/A
Carbohydrate (g):	N/A
Carbohydrate of which sugars (g):	N/A
Protein (g):	N/A
Salt (g):	N/A

Product Name: Bottega Spa Casa Bottega Prosecco DOC 75cl (11%)

Ingredients: N/A

Allergens: Contains **SULPHITES**.

Storage: Store in a cool, dry place.

Typical Value per 100g

Energy (kj):	N/A
Energy (kcal):	N/A
Fat (g):	N/A
Fat of which saturates (g):	N/A
Carbohydrate (g):	N/A
Carbohydrate of which sugars (g):	N/A
Protein (g):	N/A



Salt (g):	N/A
------------------	-----

Product Name: Walnut Tree Fruit Boat

Ingredients: Apricot (Apricot, Preservative: **SULPHUR DIOXIDE**), Cranberry (Cranberry, Sugar, Sunflower Oil), Plum (Plum, Preservative: E200), Pineapple (Pineapple, Sugar, Citric Acid, Preservative: **SULPHUR DIOXIDE**).

Allergens: For allergens, see ingredients in **CAPITALS**.

Storage: Store in a cool, dry place.

Typical Value per 100g

Energy (kj):	1347
Energy (kcal):	322
Fat (g):	0.5
Fat of which saturates (g):	0.08
Carbohydrate (g):	71.5
Carbohydrate of which sugars (g):	63
Protein (g):	2.7
Salt (g):	0.02

Product Name: Original Cake Co. 6" Round Iced Rich Fruit Cake

Ingredients: Sultanas (32%), Icing (23%) (Sugar, Glucose Syrup, Palm Oil, Water, Humectant: Glycerine (E422), Emulsifier (E471), Stabiliser (E466), Preservative (E202), Flavouring, Colour (E171)), Marzipan (21%) (Sugar, **ALMONDS**, Corn Syrup, Water, Sorbitol (E420), Preservative E202, Thickener (E401), Stabiliser (Invertase)) [**NUTS**], **WHEAT** Flour (Contains Calcium, Iron, Niacin, Thiamin), Sugar, **EGG**, Margarine (Vegetable Oil (Palm & Rapeseed), Water, Salt, Emulsifier: Distilled Monoglyceride (E471), Flavouring, Colouring (E160b, E100)), Butter [**MILK**], Glucose, Black Treacle, Emulsifier: Vegetable Glycerine (E422), Star Decoration (Sugar, Glucose Syrup, Vegetable Fat (Palm Kernel, Palm Oil), Invert Sugar Syrup, Thickeners: Xanthan Gum, Gum Arabic; Humectant: Glycerol; Emulsifier: Mono - And Diglycerides Of Fatty Acids; Glazing Agent: Shellac; Colours: Iron Oxides), Caramel Colour E150c, Raising Agents: E500, E450 [**WHEAT**].

Allergens: For allergens, see ingredients in **CAPITALS**.

Storage: Store in a cool, dry place out of direct sunlight.

Typical Value per 100g

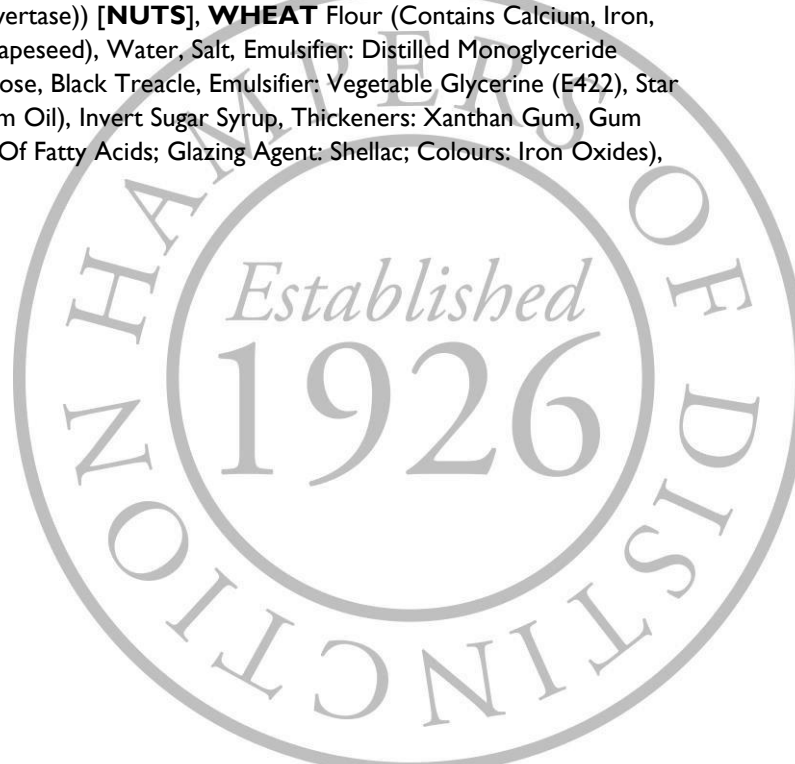
Energy (kj):	1691
Energy (kcal):	401
Fat (g):	9.1
Fat of which saturates (g):	3.5
Carbohydrate (g):	75
Carbohydrate of which sugars (g):	67
Protein (g):	3.7
Salt (g):	0.14

Product Name: New English Teas Vintage Collection Tea Tin (40s)

Ingredients: N/A

Allergens: For allergens, see ingredients in **CAPITALS**.

Storage: Store in a cool, dry place.



Typical Value per 100g

Energy (kj):	N/A
Energy (kcal):	N/A
Fat (g):	N/A
Fat of which saturates (g):	N/A
Carbohydrate (g):	N/A
Carbohydrate of which sugars (g):	N/A
Protein (g):	N/A
Salt (g):	N/A

Product Name: Filbert's Teriyaki Mochi Rice Bites 150g

Ingredients: Rice 59%, Rice Bran Oil, Tamari (**SOYBEAN**, Water, Salt, Rice), Sugar, Teriyaki Seasoning 3.7% (Sugar, Garlic Powder, Onion Powder, Ginger Powder, White Pepper, Hydrolyzed Vegetable Protein Powder, Vinegar Powder, Salt, **SESAME** Oil, Maltodextrin, Citric Acid, Natural Smoke Oil Flavour), Roasted White **SESAME** Seeds, Sweet Rice Wine (Mirin), Yeast Extract, Colour: Caramel E150a.

Allergens: For allergens, see ingredients in **CAPITALS**. Made in a facility that processes **WHEAT, MILK, NUTS, PEANUTS, FISH, MUSTARD, CRUSTACEANS, MOLLUSCS** and parts thereof.

Storage: Store in a cool, dry place.**Typical Value per 100g**

Energy (kj):	1820
Energy (kcal):	435
Fat (g):	15
Fat of which saturates (g):	3.4
Carbohydrate (g):	69
Carbohydrate of which sugars (g):	10
Protein (g):	6.3
Salt (g):	2.0

Product Name: Mrs Darlington's Winter Berry Preserve 340g

Ingredients: Sugar, Diced Plums, Blackberries, Cranberries, Pectin Rapid, Hot Water, Damson Concentrate, Mulled Wine, Lemon Juice, Cinnamon Extract.

Allergens: For allergens, see ingredients in **CAPITALS**. Packed on a site that handles **EGG, MUSTARD** and **SULPHITES**.

Storage: Store in a cool, dry place and refrigerate once opened.**Typical Value per 100g**

Energy (kj):	1085
Energy (kcal):	258
Fat (g):	0.1
Fat of which saturates (g):	0
Carbohydrate (g):	63
Carbohydrate of which sugars (g):	62
Protein (g):	0.5
Salt (g):	0



Product Name: Love Popcorn Caramelised Biscuit Crumb 100g

Ingredients: **WHEAT** Flour, Sugar, Vegetable Oils (Palm Oil from sustainable and certified plantations, Rapeseed Oil), Candy Sugar Syrup, Raising Agent (Sodium Hydrogen Carbonate), **SOYA** Flour, Salt, Cinnamon], Sugar, Golden Syrup, Coconut Oil, Glucose Syrup, Ground Cinnamon, Rapeseed Oil, Baking Soda, Salt, Flavouring, Lecithin Powder/Granules (**SOYA**).

Allergens: For allergens, see ingredients in **CAPITALS**.

Storage: Store in a cool, dry place.

Typical Value per 100g

Energy (kj):	1847
Energy (kcal):	439
Fat (g):	14
Fat of which saturates (g):	8.1
Carbohydrate (g):	72
Carbohydrate of which sugars (g):	44
Protein (g):	4.4
Salt (g):	1.4

Product Name: Elizabeth Shaw Biscuit Selection (3x140g)

1. Milk Fruit & Nut 140g

Ingredients: **MILK** Chocolate (35.5%) (Sugar, Cocoa Butter, Whole **MILK** Powder, Cocoa Mass, Vegetable Fats: (Palm, Shea, In Varying Proportions); Whey Powder (**MILK**), Emulsifiers: **SOYA** Lecithin, Polyglycerol Polyricinoleate; Flavouring), **WHEAT** Flour, Sugar, Glucose Syrup, Invert Sugar Syrup, Grain Crisps (6.3%) (Rice Flour, **WHEAT** Flour, Corn Flour, Sugar, Barley Malt Extract, Salt), Palm Fat, Currants (3.3%), **HAZELNUTS** (3.3%), Whole **MILK** Powder, Butter (**MILK**), Humectant: Sorbitol Syrup, Barley Malt Extract, Starch, Whey Powder (**MILK**), Salt, Emulsifiers: **SOYA** Lecithin, Mono- And Di-Glycerides Of Fatty Acids; Raising Agents: Ammonium Carbonate, Sodium Carbonate, Diphosphates; Flavouring.

Allergens: For allergens, see ingredients in **CAPITALS**. Also, may contain **PEANUTS** and other **NUTS**.

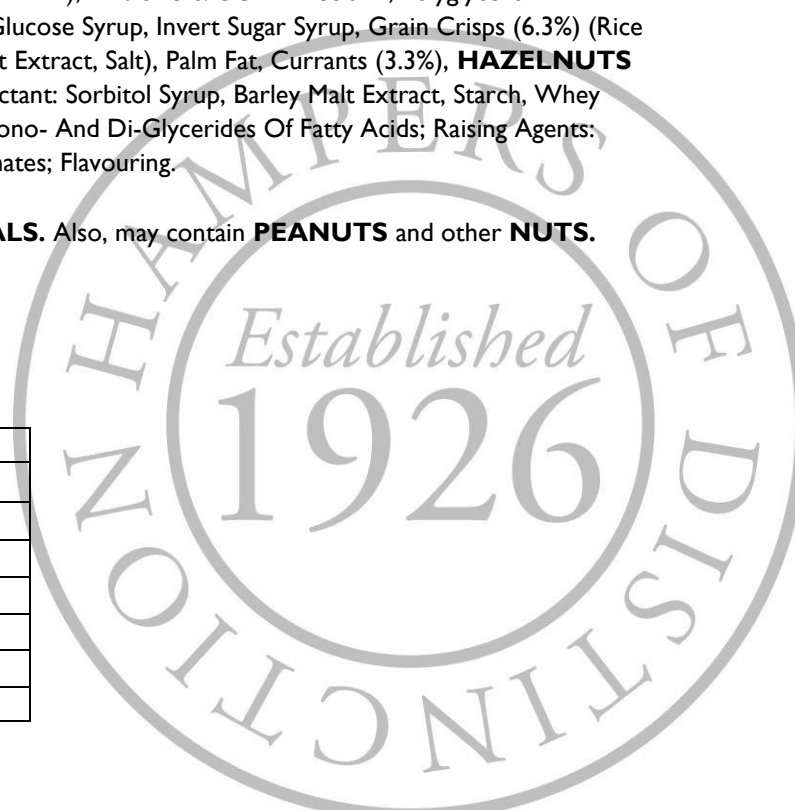
Storage: Store in a cool, dry place.

Typical Value per 100g

Energy (kj):	1990
Energy (kcal):	476
Fat (g):	22
Fat of which saturates (g):	11
Carbohydrate (g):	61
Carbohydrate of which sugars (g):	51
Protein (g):	5.7
Salt (g):	0.51

2. Milk Chocolate & Salted Caramel 140g

Ingredients: **MILK** Chocolate (35.5%) (Sugar, Cocoa Butter, Whole **MILK** Powder, Cocoa Mass, Vegetable Fats: (Palm, Shea In Varying Proportions); Whey Powder (**MILK**), Emulsifiers: **SOYA** Lecithin, Polyglycerol Polyricinoleate; Flavouring), **WHEAT** Flour, Sugar, Glucose Syrup, Invert Sugar Syrup, Grain Crisps (8.7%) (Rice Flour, **WHEAT** Flour, Salt, Corn Flour, Sugar, Barley Malt Extract), Palm Fat, **HAZELNUTS** (4.2%), Whole **MILK** Powder, Butter (**MILK**), Humectant: Sorbitol Syrup, Barley Malt Extract, Starch, Whey Powder (**MILK**), Salt (0.25%), Emulsifiers: **SOYA** Lecithin, Mono- And Di-Glycerides Of Fatty Acids; Raising Agents: Ammonium Carbonate, Sodium Carbonate, Diphosphates; Flavouring.



Allergens: For allergens, see ingredients in **CAPITALS**. Also, may contain **PEANUTS** and other **NUTS**.

Storage: Store in a cool, dry place.

Typical Value per 100g

Energy (kj):	2012
Energy (kcal):	408
Fat (g):	22
Fat of which saturates (g):	12
Carbohydrate (g):	62
Carbohydrate of which sugars (g):	46
Protein (g):	5.5
Salt (g):	1.0

3. Dark Chocolate & Orange 140g

Ingredients: Dark Chocolate (35.5%) (Sugar, Cocoa Mass, Cocoa Butter, Anhydrous **MILK** Fat, Emulsifiers: **SOYA** Lecithin, Polyglycerol Polyricinoleate; Vegetable Fats: Palm, Shea, Sal, Mango, In Varying Proportions; Flavouring), **WHEAT** Flour, Sugar, Glucose Syrup, Invert Sugar Syrup, Palm Fat, Orange Pieces (5.5%) (Concentrated Apple Puree, Orange Juice Concentrate (9%), Humectant: Glycerol; Fructose - Glucose Syrup, Glucose Syrup, **WHEAT** Fibre, Sugar, Starch, Palm Fat, Gelling Agent: Pectins; Acidity Regulator: Citric Acid; Flavouring, Antioxidant: Ascorbic Acid, Colour: Curcumin); Grain Crisps (4.2%) (Rice Flour, **WHEAT** Flour, Corn Flour, Sugar, Barley Malt Extract, Salt); Orange Juice Concentrate (2.7%), Whole **MILK** Powder, Humectant: Sorbitol Syrup; Starch, Barley Malt Extract, Whey Powder (**MILK**), Salt, Emulsifiers: **SOYA** Lecithin, Mono- And Di-Glycerides Of Fatty Acids; Raising Agents: Ammonium Carbonate, Sodium Carbonate, Diphosphates; Flavourings, **HAZELNUTS**.

Allergens: For allergens, see ingredients in **CAPITALS**. Also, may contain **PEANUTS** and other **NUTS**.

Storage: Store in a cool, dry place.

Typical Value per 100g

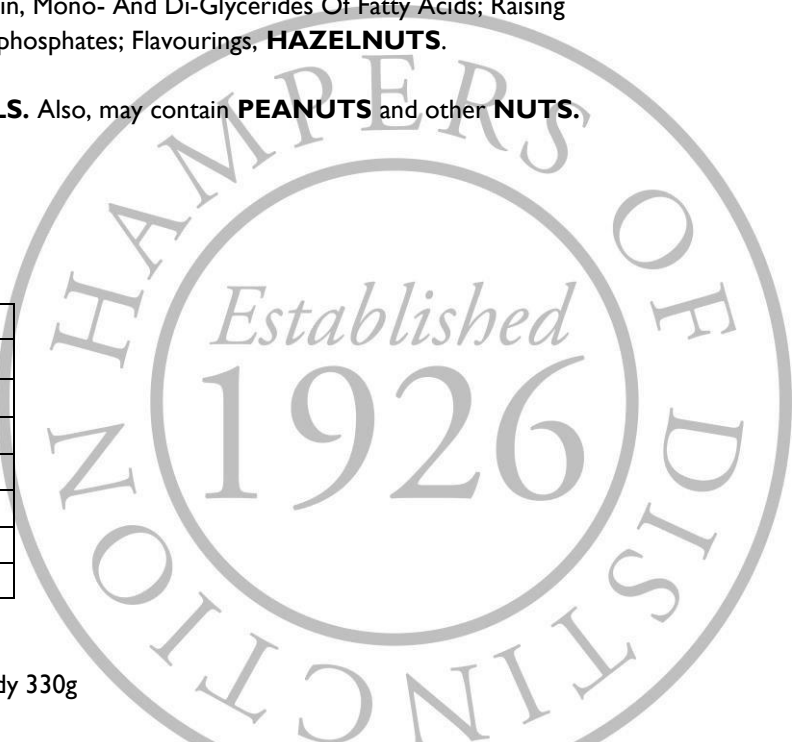
Energy (kj):	2005
Energy (kcal):	478
Fat (g):	20
Fat of which saturates (g):	12
Carbohydrate (g):	71
Carbohydrate of which sugars (g):	44
Protein (g):	4.2
Salt (g):	0.28

Product Name: Cartwright & Butler Luxury Mince Pies with Brandy 330g

Ingredients: Butter Pastry (55%): **WHEAT** Flour (Calcium, Thiamin, Iron, Niacin), Butter (32%) (**MILK**). Sugar, Salt. Mincemeat (45%): Sugar, Apple, Sultanas (19%) (Sultanas, Sunflower Oil), Raisins (11%) (Raisins, Sunflower Oil), Currants (6%) (Currants, Sunflower Oil), Glucose Syrup, Mixed Peel (3%) (Glucose, Fructose Syrup, Orange Peel, Sugar, Lemon Peel, Acidity Regulator: Citric Acid), Vegetable Suet (3%) (Palm Oil, Rice Flour, Sunflower Oil), Modified Starch, Mixed Spice, Acidity Regulator: Acetic Acid, Colour: Caramel; Orange Oil, Lemon Oil, Brandy.

Allergens: For allergens, see ingredients in **CAPITALS**. May contain traces of **NUTS**.

Storage: Store in a cool, dry place. Once opened keep in an airtight container.



Typical Value per 100g

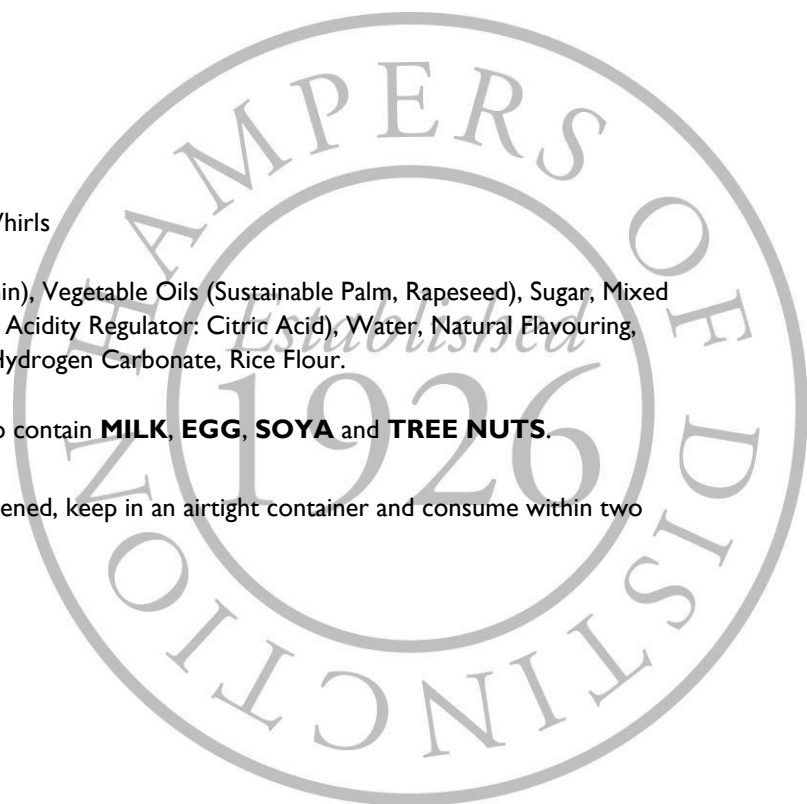
Energy (kj):	1541
Energy (kcal):	367
Fat (g):	16.1
Fat of which saturates (g):	10
Carbohydrate (g):	55.4
Carbohydrate of which sugars (g):	33.8
Protein (g):	2.9
Salt (g):	0.6

Product Name: Slumberjack Coffee Italian Espresso Pouch 220g**Ingredients:** 100% Ground Coffee.**Allergens:** For allergens, see ingredients in **CAPITALS**.**Storage:** To maintain the quality and freshness reseal after opening. Keep out of direct sunlight and store at room temperature.**Typical Value per 100g**

Energy (kj):	N/A
Energy (kcal):	N/A
Fat (g):	N/A
Fat of which saturates (g):	N/A
Carbohydrate (g):	N/A
Carbohydrate of which sugars (g):	N/A
Protein (g):	N/A
Salt (g):	N/A

Product Name: Farmhouse Winter Animals Lemon & Orange Whirls**Ingredients:** Flour (**WHEAT** Flour, Calcium, Niacin, Iron, Thiamin), Vegetable Oils (Sustainable Palm, Rapeseed), Sugar, Mixed Peel (2%) (Glucose-Fructose Syrup, Orange Peel, Lemon Peel, Salt, Acidity Regulator: Citric Acid), Water, Natural Flavouring, Natural Orange Flavouring, Raising Agents: Diphosphate, Sodium Hydrogen Carbonate, Rice Flour.**Allergens:** For allergens, see ingredients in **CAPITALS**. May also contain **MILK, EGG, SOYA** and **TREE NUTS**.**Storage:** Store in a cool, dry place out of direct sunlight. Once opened, keep in an airtight container and consume within two weeks.**Typical Value per 100g**

Energy (kj):	2290
Energy (kcal):	548
Fat (g):	29.3
Fat of which saturates (g):	9.6
Carbohydrate (g):	65.5
Carbohydrate of which sugars (g):	25.2
Protein (g):	4.6
Salt (g):	0.82

Product Name: Joybox Milk Chocolate Brazils 150g

Ingredients: Sugar, Brazil (**NUT**) (30%), **MILK** Powder, Cocoa Butter, Cocoa Mass, Vegetable Fat (Palm Oil SG), Whey (From **MILK**), Emulsifier (Sunflower Lecithin) E322, Glazing Agents: Gum Arabic, Shellac E904.

Allergens: For allergens, see ingredients in **CAPITALS**. May contains **PEANUTS** and other **NUTS**.

Storage: Store in a cool, dry place.

Typical Value per 100g

Energy (kj):	2394
Energy (kcal):	574
Fat (g):	41
Fat of which saturates (g):	18
Carbohydrate (g):	43
Carbohydrate of which sugars (g):	42
Protein (g):	9.4
Salt (g):	0.2

Product Name: Grandma Wilds Dark Chocolate Shortbread Trees 165g

Ingredients: Dark Chocolate Coating (33%) (Cocoa Mass, Sugar, Cocoa Butter, **MILK** Fat, Emulsifier: **SOYA** Lecithin; Natural Vanilla Flavouring), **WHEAT** Flour (**WHEAT** Flour, Calcium Carbonate, Iron, Niacin, Thiamin), Salted Sweetcream Butter (22%) (Cream: **MILK**; Salt), Sugar, Maize Starch, Rice Flour, Sugar Crunch Sparkle (Sugar, Water, Glazing Agent: E904; Colours: E172, E171; Glucose Syrup).

Allergens: For allergens, see ingredients in **CAPITALS**. Not suitable for **NUT** and **SESAME** allergy sufferers: may also contain traces of **EGG, MUSTARD, PEANUT** and **GLUTENS** sources (**OAT, SPELT, RYE, BARLEY**).

Storage: Store in a cool, dry place.

Typical Value per 100g

Energy (kj):	2175
Energy (kcal):	520
Fat (g):	30
Fat of which saturates (g):	19
Carbohydrate (g):	56
Carbohydrate of which sugars (g):	26
Protein (g):	5.3
Salt (g):	0.41

Product Name: Taste Classic Christmas Puddings 400g

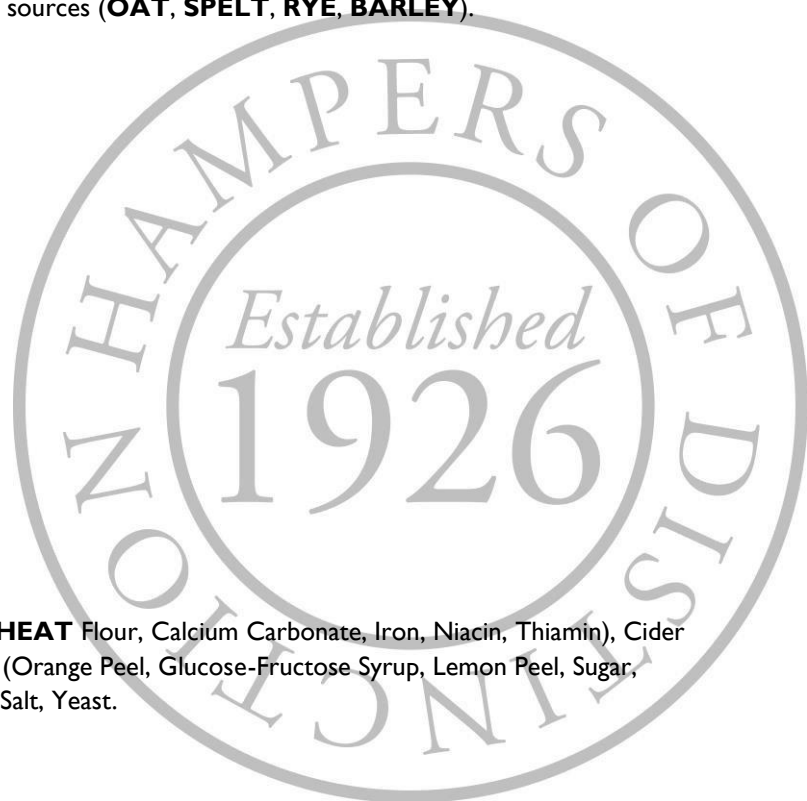
Ingredients: Sultanas (28%), Sugar, Fortified **WHEAT** Flour (**WHEAT** Flour, Calcium Carbonate, Iron, Niacin, Thiamin), Cider (9%), Water, Humectant: Glycerine, Palm Oil, Candied Mixed Peel (Orange Peel, Glucose-Fructose Syrup, Lemon Peel, Sugar, Acidity Regulator (Citric Acid)), Rum (1%), Mixed Spice, Molasses, Salt, Yeast.

Allergens: For allergens, see ingredients in **CAPITALS**.

Storage: Store in a cool, dry place.

Typical Value per 100g

Energy (kj):	1327
Energy (kcal):	315
Fat (g):	5



Fat of which saturates (g):	2.3
Carbohydrate (g):	65.4
Carbohydrate of which sugars (g):	48
Protein (g):	2.6
Salt (g):	0.1

Product Name: Silver & Green Paprika Chilli Olives 220g

Ingredients: Pitted Green Olives (51%), Pitted Kalamata Olives (25%), Sunflower Oil (21%), Extra Virgin Olive Oil (2%), Smoked Paprika (<1%), Chilli Flakes (<1%), Salt, Ascorbic Acid.

Allergens: For allergens, see ingredients in **CAPITALS**. Produced in a factory that handles **NUTS, PEANUTS** and **SOYA**.

Storage: Store in a cool, dry place. Refrigerate once opened.

Typical Value per 100g

Energy (kj):	1247
Energy (kcal):	303
Fat (g):	33
Fat of which saturates (g):	4.3
Carbohydrate (g):	0.2
Carbohydrate of which sugars (g):	0.1
Protein (g):	0.7
Salt (g):	2.1

Product Name: Savoursmiths Desert Salt Crisps 150g

Ingredients: Potatoes, Sunflower Oil, Desert Salt.

Allergens: For allergens, see ingredients in **CAPITALS**.

Storage: Store in a cool, dry place.

Typical Value per 100g

Energy (kj):	2043
Energy (kcal):	488
Fat (g):	29
Fat of which saturates (g):	2.5
Carbohydrate (g):	53
Carbohydrate of which sugars (g):	0.8
Protein (g):	6.1
Salt (g):	1.78

Product Name: Lily O'Brien's Christmas Deserts Collection 312g

Ingredients: Dark Chocolate [Cocoa Mass, Sugar, Cocoa Butter, Emulsifier (**SOYA** Lecithin), Natural Vanilla Flavouring], **MILK** Chocolate [Sugar, Whole **MILK** Powder, Cocoa Butter, Cocoa Mass, Emulsifier (**SOYA** Lecithin), Natural Vanilla Flavouring], White Chocolate [Sugar, Cocoa Butter, Whole **MILK** Powder, Emulsifier (**SOYA** Lecithin), Natural Vanilla Flavouring], Chocolate Filling [Vegetable Oil (Palm), Sugar, Whole **MILK** Powder, Cocoa Butter, **MILK** Fat, Cocoa Mass, Emulsifier (**SOYA** Lecithin), Natural Vanilla Flavouring], Caramel [Sugar, Glucose Syrup, Coconut Oil, Water, Sweetened Condensed Skimmed **MILK** (**MILK**, Sugar, Lactose (**MILK**)), **MILK** Chocolate [Sugar, Cocoa Butter, Cocoa Mass, Whole **MILK** Powder, Whey Powder (**MILK**), Emulsifier (**SOYA** Lecithin), Butter (**MILK**), Natural Vanilla Flavouring, Salt], Glucose Syrup, Lemon Filling [Glucose Syrup, Sugar, Sweetened Condensed Skimmed **MILK** (**MILK**, Sugar), Water, Palm Oil, Stabiliser (Sorbitol), Modified



Starch (Maize), Lemon Concentrate, Acidity Regulator (Citric Acid), Natural Lemon Flavouring, Emulsifier (Mono & Diglycerides of Fatty Acids), Colour (Beta Carotene)], **HAZELNUTS** Praline (**HAZELNUTS**, Sugar, Emulsifier (**SOYA** Lecithin), Natural Vanilla Flavouring), Caramelised **HAZELNUTS** [**HAZELNUTS**, Sugar, Caramel (Sugar, Water)], Invert Sugar Syrup, Vegetable Oil (Rapeseed), Water, Freeze Dried Raspberry Pieces (Raspberries, Glucose Syrup), Brown Sugar, Biscuit Pieces [**WHEAT** Flour, Sugar, **WHEAT** Malt, **WHEAT** Starch, Raising Agent (Sodium Bicarbonate), Salt, Natural Vanilla Flavouring], Acidity Regulator (Citric Acid), Natural Flavours, Chocolate Coated Toffee Balls [Sugar, Whole **MILK** Powder, Cocoa Butter, Glucose Syrup, Cocoa Mass, Butter (**MILK**), Skimmed **MILK** Powder, Emulsifier (**SOYA** Lecithin), Glazing Agent (Gum Arabic), Natural Flavouring, Salt, Vegetable Fat (Palm), Raising Agent (Sodium Bicarbonate)], White Meringue Pieces [Sugar, **WHEAT** Starch, **EGG** Albumen, Vegetable Fats (Shea, Palm & **SOYA**)], Lemon Oil, Lime Oil, Colourings (Carotene, Sunflower Oil), Green Colour (Curcumin, Copper Chlorophyll).

Allergens: For allergens, see ingredients in **CAPITALS**.

Storage: Store in a cool, dry place away from moisture, strong sunlight and odours.

Typical Value per 100g

Energy (kj):	2232
Energy (kcal):	536
Fat (g):	33
Fat of which saturates (g):	19
Carbohydrate (g):	52
Carbohydrate of which sugars (g):	46
Protein (g):	5.6
Salt (g):	0.18

Product Name: Grandma Wilds Mini Cheesy Bites with Mature Cheddar 100g

Ingredients: **WHEAT** Flour (**WHEAT** Flour, Calcium Carbonate, Iron, Niacin, Thiamin), Cheddar Cheese (22%) (**MILK**, Potato Starch), Vegetable Oil (Palm Oil), **OATS**, Water, Sugar, Salt, Natural Flavouring, Raising Agents: Disodium Diphosphate, Sodium Bicarbonate.

Allergens: For allergens, see ingredients in **CAPITALS**. Not suitable for **NUTS** and **SESAME** allergy sufferers: may also contain traces of **EGG**, **MUSTARD**, **PEANUT**, **SOYA** and other **GLUTEN** sources (**SPELT**, **RYE**, **BARLEY**).

Storage: Store in a cool, dry place avoiding direct sunlight. Once opened, keep in an airtight container and consumer within 30 days.

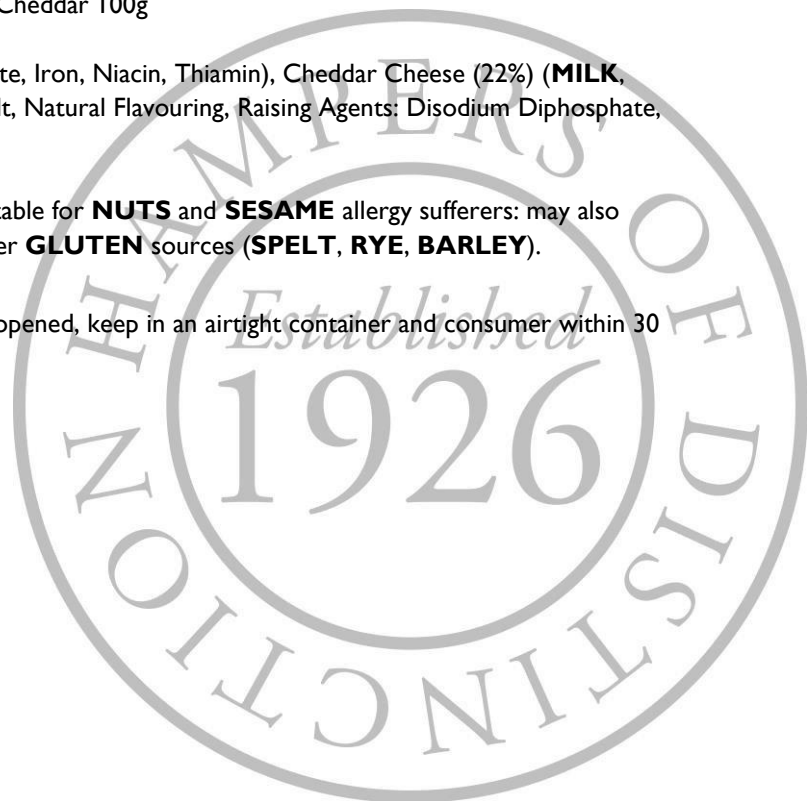
Typical Value per 100g

Energy (kj):	1923
Energy (kcal):	460
Fat (g):	26
Fat of which saturates (g):	13
Carbohydrate (g):	42
Carbohydrate of which sugars (g):	2.8
Protein (g):	13
Salt (g):	1.86

Product Name: Monty Bojangles Flutter Scotch Tip Top 150g

Ingredients: Vegetable Oils (Coconut Palm Kernel), Sugar, Fat Reduced Cocoa Powder, Whey Powder (From **MILK**), Butterscotch Chips (5%) (Sugar, Glucose Syrup, Cream [**MILK**], Skimmed **MILK** Powder, Salted Butter (Butter [**MILK**], Salt), Sea Salt), Cocoa Powder, Emulsifier (**SOYA** Lecithin), Natural Flavouring.

Allergens: Contains **SULPHITES**. May contain traces of **BARLEY**, **EGGS**, **NUTS**, **SESAME** and **WHEAT**.



Storage: Store in a cool, dry place.

Typical Value per 100g

Energy (kj):	2452
Energy (kcal):	590
Fat (g):	44
Fat of which saturates (g):	37
Carbohydrate (g):	43
Carbohydrate of which sugars (g):	41
Protein (g):	4
Salt (g):	0.2

Product Name: Buttermilk Candy Cane Fudge 100g

Ingredients: Sugar, Sweetened Condensed **MILK** (Whole **MILK**, Sugar), Salted Butter (**MILK**, Salt), Golden Syrup, Glucose Syrup, Peppermint Candy Cane Pieces (3%) (Sugar, Glucose Syrup, Natural Peppermint Flavouring, Natural Colours: Anthocyanin, Paprika Extract), Natural Peppermint Oil, Salt.

Allergens: For allergens, see ingredients in **CAPITALS**. Made in a factory that uses **PEANUTS** and **TREE NUTS** as ingredients.

Storage: Store in a cool, dry place. Do not refrigerate. Once opened keep tightly sealed and consume within two weeks.

Typical Value per 100g

Energy (kj):	1652
Energy (kcal):	392
Fat (g):	11
Fat of which saturates (g):	6.9
Carbohydrate (g):	71
Carbohydrate of which sugars (g):	71
Protein (g):	1.3
Salt (g):	0.49

Product Name: Hawken's Christmas Trees 125g

Ingredients: Flour (**WHEAT**), Sugar, Vegetable Fat (Palm, Rapeseed, Sunflower), Golden Syrup, Crystallised Ginger, **EGGS**, Black Treacle (**SULPHITES**), Mixed Peel, Baking Powder (**WHEAT**), Ground Ginger (1%), Mixed Spice (1%), Ground Cloves, Salt, Bicarbonate Of Soda.

Allergens: For allergens, see ingredients in **CAPITALS**.

Storage: Store in a cool, dry place.

Typical Value per 100g

Energy (kj):	1572
Energy (kcal):	373
Fat (g):	11.2
Fat of which saturates (g):	4
Carbohydrate (g):	62.3
Carbohydrate of which sugars (g):	33.8
Protein (g):	4.7



Salt (g):	1.2
-----------	-----

Product Name: Cartwright & Butler Chilli & Garlic Flatbread Crackers 130g

Ingredients: **WHEAT** Flour (42.8%), Water, Whole Grain Rye Flour, **SESAME SEEDS**, Sweet Chilli (Natural Spices (Chilli, Jalapeno, Red Bell Pepper, Tomato, Garlic, Ginger), Sugar) (3.6%), Yeast, Rapeseed Oil, Linseeds, Garlic Granules (1.3%), Sugar, Sea Salt.

Allergens: For allergens, see ingredients in **CAPITALS**. May also contain traces of **MILK** and **NUTS**.

Storage: Store in a cool dry place away from direct sunlight in an airtight container.

Typical Value per 100g

Energy (kj):	1679
Energy (kcal):	399
Fat (g):	10.2
Fat of which saturates (g):	1.4
Carbohydrate (g):	59.1
Carbohydrate of which sugars (g):	7.3
Protein (g):	13.2
Salt (g):	1.7

